

What is html?

HyperText Markup Language (html) is one of the languages of the Internet. HTML is the code running behind a web page that tells an Internet browser, such as Internet Explorer or Netscape, what to display to the web page visitor. HTML code is based upon tags. For the most part, tags have two parts: an open tag and a close tag; however, some html tags do not require close tags. Regardless of whether a tag consists of one part or two, they all have the same structure: `<html> </html>`.

Each tag starts with a less than symbol (`<`) and ends with a greater than symbol (`>`). The difference between the open tag and the close tag is the forward slash (`/`) after the less than symbol (`<`).

- `<html>` is an open tag
- `</html>` is a close tag

The information that is contained between the two tags is what visitors to the web page will see. For example,

`<p>This text is what a visitor to the web page will see.</p>`

web page visitors will not see the two paragraph tags (`<p></p>`), they will only see the text that the tags contain.

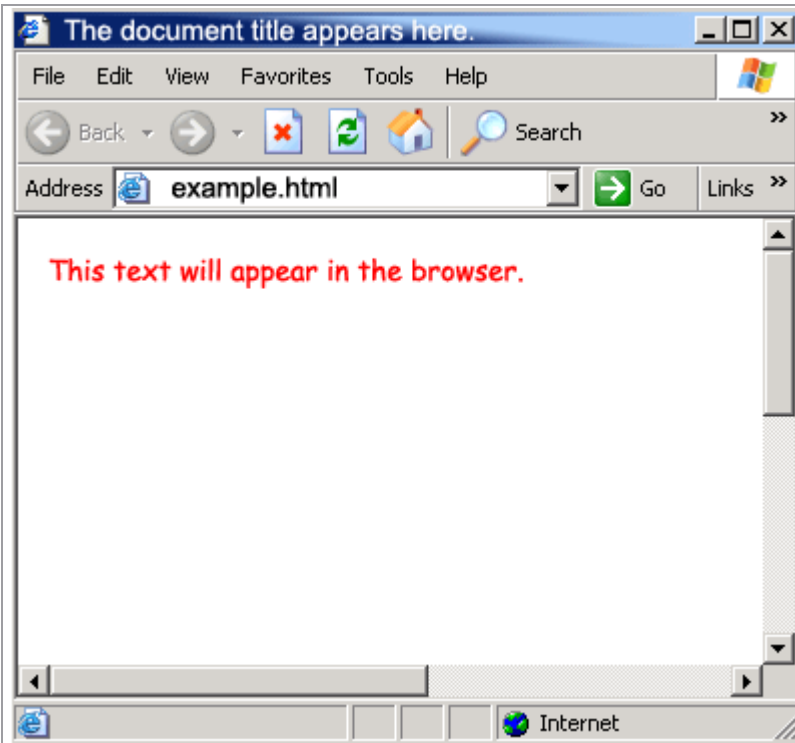
Open tags also consist of attributes. An attribute is what you use to change something about the tag. For instance,

`This text will appear in red.`

the text is still contained between the open and close tags, but the open tag consist of the tag and its attribute. `` is the font tag; `color="red"` is the tag's attribute.

```
<html>
<head>
<title>
The document title appears here.
</title>
</head>
<body>
<font color="red" face="Comic Sans">
<p>
This text will appear in the browser.
</p>
</font>
</body>
</html>
```

This image represents the html code.



This image represents the browser view of the html code.

The top image contains all of the html code necessary to achieve the page shown in the browser in the bottom image. Notice that the font tag has two different attributes: color and

face. The color attribute controls what color the text will be and the face attribute controls which font the browser will use to display the text. The end result is that the words "This text will appear in the browser" are red and in the Comic Sans typeface.

What are some common html tags?

Open Tag	Common Attributes	Close Tag	Description	Code Example
	color=" " " face=" " " size=" " "		Controls the various options for fonts including sizes, colors and typefaces.	Blue Text
<a>	href=" " " target=" " "		Used for hyperlinks.	Ashland University
 	none	none	Used to to create a line break.	This sentence will have a break in the middle of it.
<p>	align=" " "	</p>	Creates a new paragraph.	<p>This sentence begins a new paragraph. The second sentence in this paragraph is this one.</p>
	none		Bolds the text.	Bold Text
<i>	none	</i>	Creates Italics.	<i>Italic Text</i>
<u>	none	</u>	Underlines the text.	<u>Underlined Text</u>
<s>	none	</s>	Creates a Strike through for the text.	<s>This text will have a strike through.</s>
<center>	none	</center>	Centers text or objects on the page.	<center>Centered Text</center>
<table>	cell padding=" " " cell spacing=" " "	</table>	Creates a table on the page. When you are using html the easiest way to control where an object or text appears on a page is to place that information into tables.	<table cell padding="0"> <tr> <td>Cell 1 Row 1</td> <td>Cell 2 Row 1</td> </tr> <tr> <td>Cell 1 Row 2</td> <td>Cell 2 Row 2</td> </tr> </table>
<tr>	none	</tr>	Begins and ends a new row in a table.	
<td>	align=" " "	</td>	Begins and ends	

			a new cell in a table.	
--	--	--	------------------------	--

Please keep in mind that the html tags will not change the text if you are looking at it in code view. The only times the tags will take effect is if you are previewing the page in a browser or if you are using a WYSIWYG (What You See Is What You Get) HTML editor such as Netscape Composer, Namo WebEditor or Macromedia's Contribute.

What are some common html editors?

HTML editors allow you to design web pages without knowing html codes. "So why do I need to know code if I'm using an editor?" you might ask. The answer is simple; some html editors add extra or proprietary code into web pages. If you know what you are looking at when you view the code you can remove this extra material. Also, at times an html editor will not, for whatever reason, create your pages exactly how you want them. Usually in these cases there is an extra line of code or code in the wrong location that effects the rest of the page. For the most part, however, html editors are easy to use and can help you design web pages quickly and efficiently.

Netscape Composer is a free html editor that is included with the download for Netscape Communicator. Like most html editors, Composer provides you with a couple of different ways to look at your page: design view, source view and preview.

- **Design View** is the WYSIWYG view for html editors. Design view allows you to create a web page much like you would create a document in Microsoft Word. You can change the font, font styles and font colors simply by clicking a button on the toolbar just like in Word.
- **Source View** allows you to view the html code that the editor is using to create your page. As previously stated, knowing what you are looking at in the Source View can be helpful especially if you are having problems with a page.
- **Preview** allows you to view your page in an Internet Browser such as Internet Explorer or Netscape Communicator. Please keep in mind that all browsers DO NOT display every page the same way. You should always check your pages in at least two different browsers to see how the browsers will display them.

Namo WebEditor and Macromedia's Contribute are both a little more advanced HTML Editors but still make creating your own web pages easy. For more information about obtaining a copy of either Namo or Contribute please contact the helpdesk at extension 5405 or e-mail help@ashland.edu

If you have any problems or questions please feel free to contact Information Technology at ext. 5405 (419-289-5405 off campus) or e-mail the HelpDesk at help@ashland.edu